



Optional modulating
remote control

Domina N

Wall hung instant combi gas boiler


ferrolli

> THE CHOICE OF WARMTH AND COMFORT FOR YOUR HOME

DOMINA N is a wall hung boiler for central heating and instant domestic hot water production. The appliance offers the user compact dimensions, robust construction and simple operation.



> RANGE

OPEN FLUE

C 20 MAX INPUT 22,0 kW

C 24 MAX INPUT 25,8 kW

C 28 MAX INPUT 30,8 kW

C 32 MAX INPUT 34,4 kW

FORCED FLUE, ROOM SEALED

F 20 MAX INPUT 21,5 kW

F 24 MAX INPUT 25,8 kW

F 28 MAX INPUT 30,0 kW

F 32 MAX INPUT 34,4 kW



3 star energy marking according to 92/42 EEC Directive (F model)



Can be connected to modulating remote control



Settable function keeping the exchanger warm, thus granting **ultra-prompt supply of DHW**

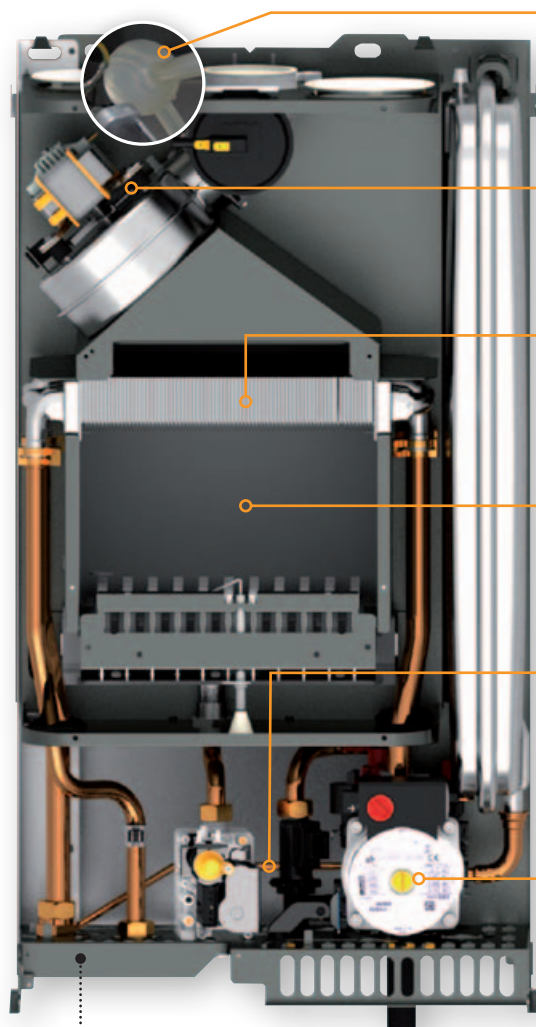


Automatic function which **avoids risk of frost** in boiler's CH circuit in stand-by mode (if gas and power supplied)



Can be combined with **DHW pre-heating** appliances, such as solar collectors

- > **Bithermic** copper exchanger
- > Combined control panel: knobs, buttons, LEDs for a quick, easy handling of boiler operation
- > **3 speed pump** with antiseize function: it is switched on for few seconds in case of 24 hours inactivity
- > Hydraulic bypass as a standard
- > Atmospheric burner in stainless steel AISI 304
- > **High efficiency**, 3 stars according to EN 92/42 (F model)
- > Modulating operation both in heating and domestic hot water mode
- > Can be combined with modulating remote control
- > **ECO/COMFORT** mode: choice of Comfort mode maintains exchanger warm, drastically reducing waiting time for domestic hot water supply
- > Condensing trap for air pressure switch
- > Compact dimensions thus enabling installation, also in place where limited space is available
- > Protection index IP X5D, which means excellent electrical protection of the appliance
- > Smartly manages and supplements pre-heated DHW from external sources (i.e. thermal solar)

> **COMPONENTS****PRODUCT PLUSES - CONTROL PANEL AND FUNCTIONS**

Domina F 20 N

CONDENSING TRAP

Protecting fan air pressure switch against air humidity

FAN UNIT

The fan assembly is mounted on silent blocks and includes condensing trap

EXCHANGER

The bithermic exchanger is in pure copper, protected by an atoxic aluminium treatment

COMBUSTION CHAMBER

Insulated with ecological fiber

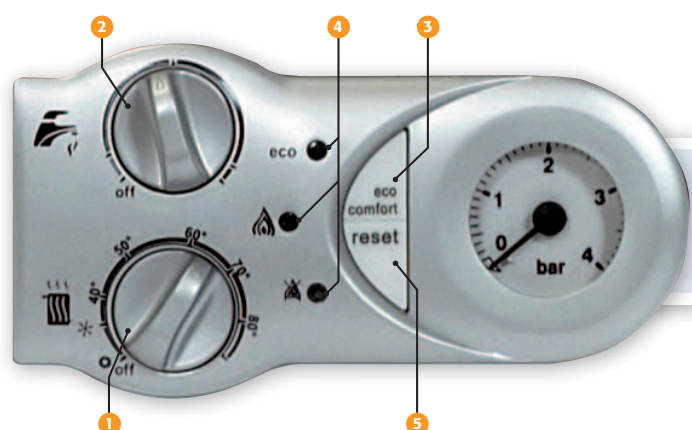
HYDRAULIC BYPASS

Ensuring minimum flow rate through the exchanger at all times

PUMP ASSEMBLY

Including 3 speed pump, flowswitch, safety valve, pressure switch

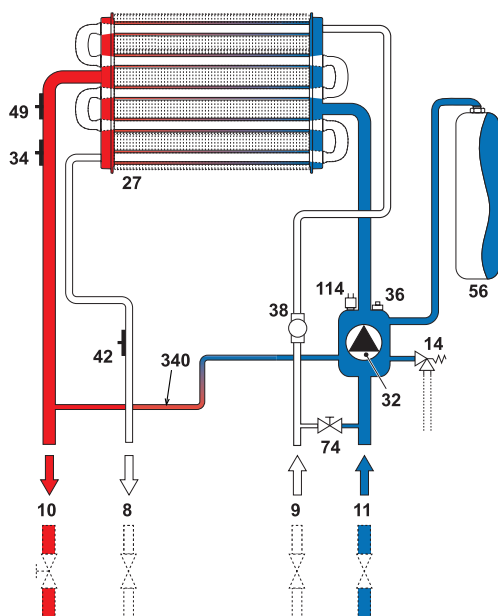
> SIMPLE INTERFACE + RATIONAL WIRING Control board of DOMINA N has been conceived to grant the most simplicity to the user for standard operations. The two knobs permit indeed CH and DHW operation, as well as switch ON/OFF. Evolved functions as well as service operations are possible through the soft-touch buttons. Leds indicate operation status, as well as indications for troubleshooting and setting actions. The complete wiring box can be easily rotated downwards to completely access gas valve, with facilitated connection for room thermostat.



- 1 CH temperature setting and summer/winter selection
- 2 DHW deactivation and temperature setting
- 3 ECO/COMFORT selection
- 4 Leds indicating operation status and anomalies
- 5 RESET button

> WATER CIRCUIT SCHEMES

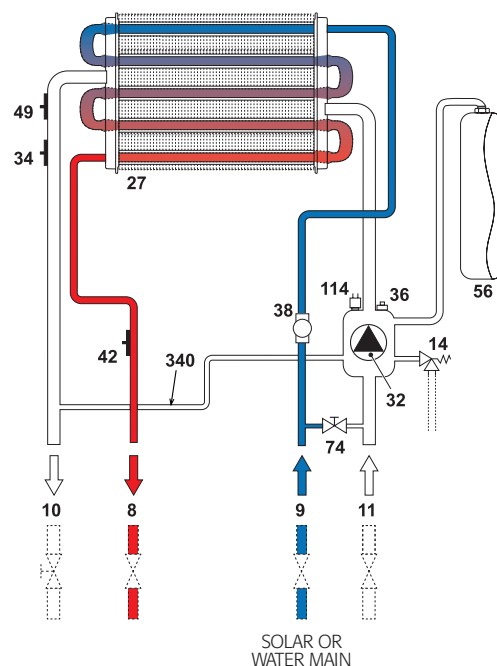
> HEATING



KEY

8 DHW supply 9 tap water inlet 10 CH flow 11 CH return 14 safety valve 27 bithermic exchanger 32 system pump 34 CH sensor 36 automatic air vent 38 flow switch 42 DHW sensor 49 safety thermostat 56 expansion vessel 74 system filling valve 114 water pressure switch 340 bypass pipe

> SANITARY



> COMFORT AND SAFETY FUNCTIONS

DOMINA N features functions aimed to preserve boiler's integrity and offering the user a higher sanitary and climatic comfort.

> MODULATING REMOTE CONTROL

The ROMEO remote control can be used as an option in combination with **DOMINA N**. Besides offering the possibility to plan room and DHW temperatures, ROMEO (unlike traditional timer-thermostats) allows boiler output to be modulated progressively as it approaches the set room temperature. This improves comfort and reduces gas consumption. Moreover, thanks to Opentherm® communication protocol, it is possible to manage boiler's operation directly from ROMEO, i.e. setting and monitoring boiler's parameters and eventually restart the appliance.

> SOLAR INTEGRATION

Water coming for solar system (both natural or forced flow type) is "wisely" and precisely "post-heated" by the boiler, only in case temperature is below the setpoint desired by the user. Saving in fresh seasons, when water is only pre-heated by solar plant, is thus enhanced.

> ANTIFROST

Automatic **ANTIFROST** operation implies the boiler always detects temperature of CH sensor is over 6°C. This occurs with boiler in stand-by mode - so with no fault signal - and provided it is gas and power supplied. In case temperature drops below 6°C, burner and pump will be switched on, thus mitigating also system's temperature.

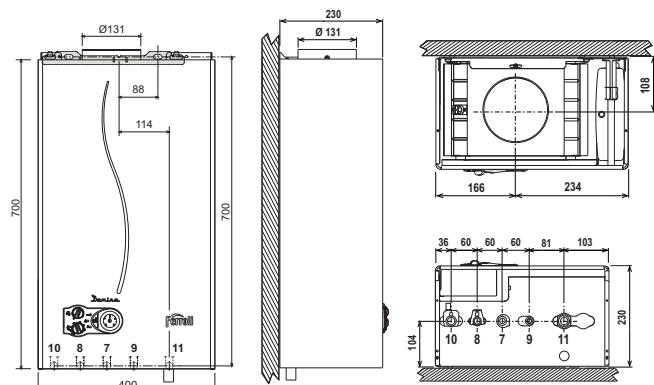
> ECO/COMFORT

COMFORT setting can be selected as an alternative of the ECONOMY ordinary operation. By choosing COMFORT option, temperature in the heat exchanger will be maintained at 35°C, eventually igniting the burner at the minimum output. This will drastically reduce the waiting time for DHW supply, practically limiting it to length and dispersions of sanitary line.

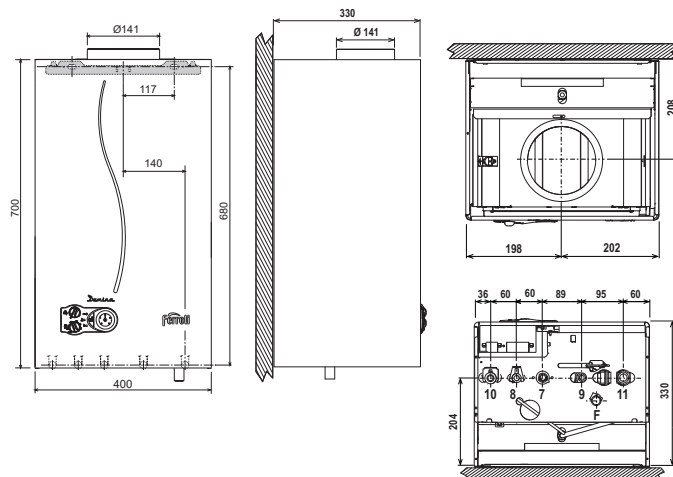
> TECHNICAL SPECIFICATIONS

DIMENSIONS - SUMMARY TABLE

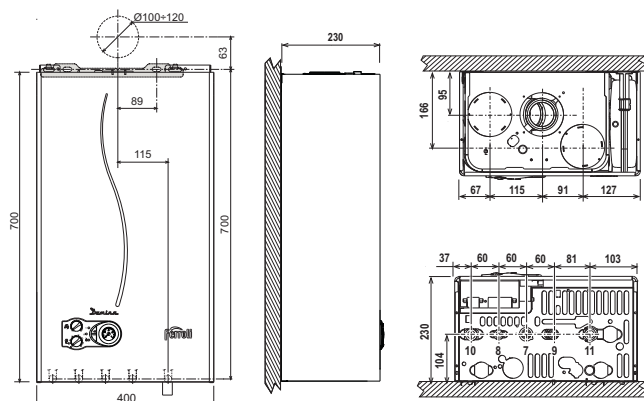
DOMINA C 20 N - C 24 N



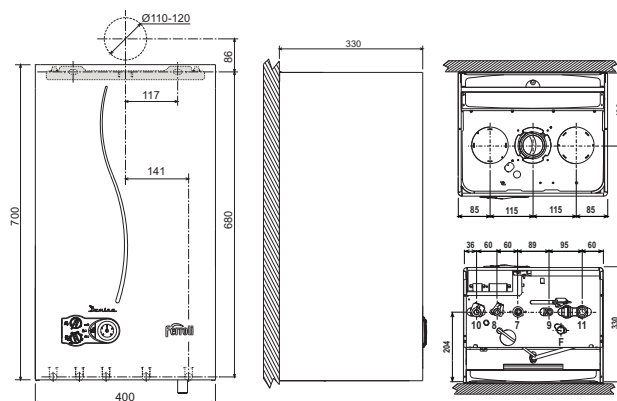
DOMINA C 28 N - C 32 N



DOMINA F 20 N - F 24 N



DOMINA F 28 N - F 32 N



KEY 7 1/2" Ø gas inlet 8 1/2" Ø DHW outlet 9 1/2" Ø DHW inlet 10 3/4" Ø CH flow 11 3/4" Ø CH return

MODEL			C 20 N	C 24 N	C 28 N	C 32 N	F 20 N	F 24 N	F 28 N	F 32 N
Heating capacity	Max	kW	22,0	25,8	30,8	34,4	21,5	25,8	30,0	34,4
	Min	kW	8,3	8,3	11,5	11,5	8,3	8,3	11,5	11,5
Thermal output in heating	Max	kW	20,0	23,5	28,0	31,3	20,0	24,0	28,0	32,0
	Min	kW	7,0	7,0	9,9	9,9	7,2	7,2	9,9	9,9
Thermal input in hot water production	Max	kW	22,0	25,8	34,4	34,4	21,5	25,8	34,4	34,4
	Min	kW	8,3	8,3	11,5	11,5	8,3	8,3	11,5	11,5
Thermal output in hot water production	Max	kW	20,0	23,5	31,3	31,3	20,0	24,0	32,0	32,0
	Min	kW	7,0	7,0	9,7	9,7	7,2	7,2	9,9	9,9
Efficiency Pmax (80-60°C)		%	91,0	91,0	91,0	91,0	93,0	93,0	93,1	93,1
Efficiency 30%		%	89,6	89,6	89,8	89,8	90,5	90,5	91,0	91,0
Efficiency class Directive 92/42 EEC		-	★★	★★	★★	★★	★★★	★★★	★★★	★★★
NOx emission class		-	3 (<150 mg/kWh)							
Operating pressure in heating	Max	bar	3	3	3	3	3	3	3	3
	Min	bar	0,8	0,8	0,8	0,8	0,8	0,8	0,8	0,8
Max heating temperature		°C	90	90	90	90	90	90	90	90
Heating water content		litres	1,2	1,2	1,2	1,2	1,0	1,0	1,2	1,2
Heating expansion tank capacity		litres	8	8	10	10	8	8	10	10
Operating pressure in hot water production	Max	bar	9	9	9	9	9	9	9	9
	Min	bar	0,25	0,25	0,25	0,25	0,25	0,25	0,25	0,25
DHW flowrate	Δt 25°C	l/min	11,5	13,4	17,9	17,9	11,5	13,7	18,3	18,3
	Δt 30°C	l/min	9,6	11,2	14,9	14,9	9,6	11,4	15,2	15,2
Protection rating		IP	X5D	X5D	X5D	X5D	X5D	X5D	X5D	X5D
Power supply voltage		V/Hz	230V / 50Hz							
Electrical power input in central heating		W	80	80	90	90	110	110	135	135
Empty weight		kg	25	25	30	30	30	30	35	35



NOTICE FOR DEALERS:

As part of its efforts to constantly improve its range of products, with the aim of increasing the level of customer satisfaction, the company stresses that the appearance, dimensions, technical data and accessories may be subject to variation.

Consequently, ensure that the customer is provided with up-to-date technical and/or sales documents.

FERROLI around the World

GLOBAL www.ferrolì.it/en

ITALY www.ferrolì.it

SPAIN www.ferrolì.es

FRANCE www.ferrolì.fr

UNITED KINGDOM www.ferrolì.co.uk

NETHERLANDS www.ferrolì.nl

GERMANY www.ferrolì.de

TURKEY www.ferrolì.com.tr

ROMANIA www.ferrolì.ro

POLAND www.ferrolì.com.pl

RUSSIA www.ferrolì.ru

UKRAINE www.ferrolì.ua

BELARUS www.ferrolì.by

CHINA www.ferrolì.com.cn

BALKANS www.ferrolì.hr

IRAN www.ferrolì.ir

VIETNAM www.ferrolì.com.vn